



Addition - Adding Whole Hundreds

Add the two whole hundreds numbers to find the sum

Example:

$$200 + 300 = \underline{500}$$

$100 + 300 = \underline{\quad}$

$700 + 500 = \underline{\quad}$

$600 + 300 = \underline{\quad}$

$500 + 200 = \underline{\quad}$

$500 + 900 = \underline{\quad}$

$400 + 400 = \underline{\quad}$

$800 + 600 = \underline{\quad}$

$900 + 100 = \underline{\quad}$

$200 + 600 = \underline{\quad}$

$300 + 300 = \underline{\quad}$

$700 + 500 = \underline{\quad}$

$400 + 700 = \underline{\quad}$

$900 + 600 = \underline{\quad}$

$800 + 400 = \underline{\quad}$

$400 + 600 = \underline{\quad}$

$200 + 800 = \underline{\quad}$

$100 + 700 = \underline{\quad}$

$800 + 600 = \underline{\quad}$

$900 + 300 = \underline{\quad}$

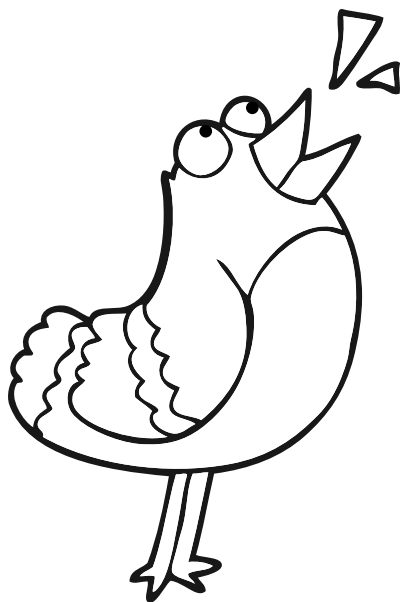
$100 + 400 = \underline{\quad}$

$600 + 900 = \underline{\quad}$

$200 + 200 = \underline{\quad}$

$400 + 800 = \underline{\quad}$

$600 + 500 = \underline{\quad}$



Wow -you're amazing! Cheap Cheap!

